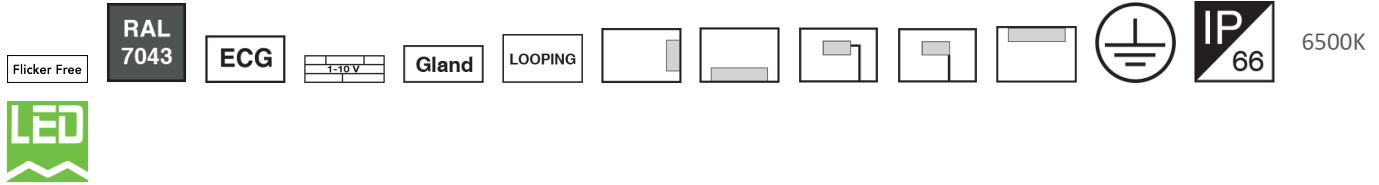


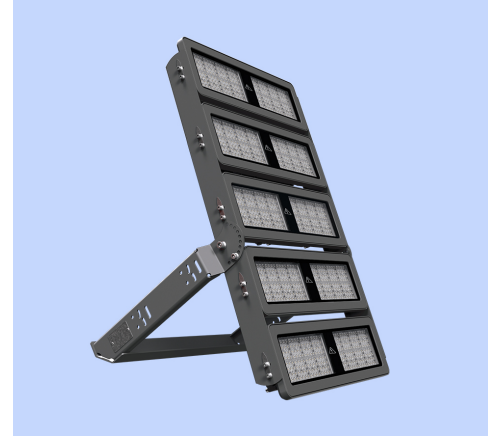
## M321N5B20LED18765-S

**GALAXY modular floodlight (5-cell), Narrow light distribution, 5000K, LED18, 150000 Lumens, 1000W, Gray**



### About Product

GALAXY modular floodlight is Megalite state of the art design suitable for lighting large open areas, sport venues and other floodlight applications on high masts. High pressure die-cast aluminum body, adjustable LED compartment, and high ingress protection (IP66) are among the highlights of this luminaire.



### Technical Information

Luminaire Name:	GALAXY
Catalog Code/product code:	M321N5B20LED18765-S
Mounting Type:	Wall Mounted; Surface Mounted, Surface Mounted, Vertical pole mounting, Horizontal boom mounting, Ground mounting
Application:	Sports area, Facade and architectural lighting
Light source type:	LED
Module/ Lamp quantity:	20
CCT (Color temperature):	6500K - Daylight
Light source:	LED
LED Module brand name:	Edison
Lumen maintenance:	> 100.000 hours
Lumen maintenance factor:	L80
CRI (Color rendering index):	> 70
Power Consumption:	1000
Luminous Flux:	150000
Efficacy (lm/W):	150
IP (Ingress Protection):	IP66
Insulation Class:	Class I
Max. Ambient Temperature:	50°C

**M321N5B20LED18765-S**
**GALAXY modular floodlight (5-cell), Narrow light distribution, 5000K, LED18, 150000 Lumens, 1000W, Gray**

Min. Ambient Temperature:	-30°C
Ballast/ Driver:	Constant Current Driver (PF> 0.9)
Ballast/ Driver brand name:	Vossloh Schwabe
Driver quantity:	5
FLICKER:	Flicker Free
Ballast/ driver Spec:	Dimmable (1-10V), short-circuit protection
Ballast/ Driver (Channel quantity):	Single channel
Mains voltage:	100~277 VAC±10%
Voltage Frequency:	50/60 Hz
Wire / Cable Spec:	PVC solid cable
Wire cross section:	1
Terminal material:	Polyamide
Terminal Spec:	Cable looping is possible, Tool free wire connection, 3-Pole (Size: 2.5)
Cable Looping:	Yes
Cable Gland Spec:	Brass
Cable gland type:	PG13.5
Body Material:	Die-Cast aluminum
Body Coating:	Powder coated
Body Color:	Gray
RAL:	RAL7043
Diffuser/Glass Material:	Tempered glass
Diffuser/Glass Shape:	Flat
Diffuser/Glass Characteristic:	5mm thickness
Lens Material:	clear Acrylic
Light Distribution:	25 degrees
Gasket Material:	silicon
Gasket Characteristic:	High thermal resistance, Ingress protection against dust and moisture
Interior Connection Material:	Galvanized coated
Exterior Connection Material:	Dacromet coated
Packaging type:	Nylon cover and carton
Other Characteristics:	Sturdy steel handle with rotation possibilities up to -90 degrees and +60 degrees in 15-degree steps
Weight(Kg):	35

**M321N5B20LED18765-S****GALAXY modular floodlight (5-cell), Narrow light distribution, 5000K, LED18, 150000 Lumens, 1000W, Gray**

Dimensions(mm): 990x600x100

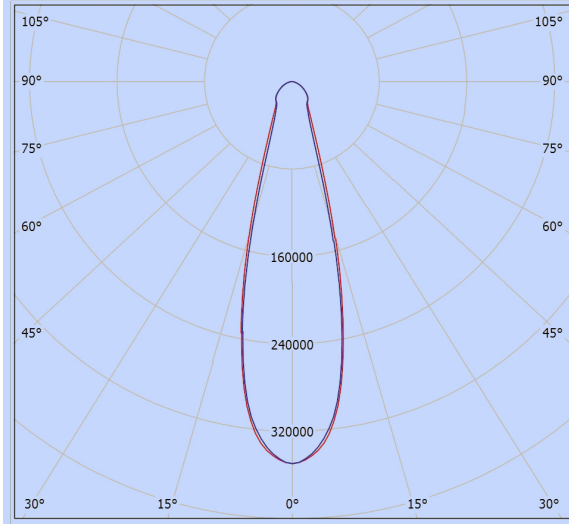
Luminaire mechanical impact resistance: IK09

Order Option (Routine option): Customizable Timer Dimming scenarios. Available for ambient temperatures up to 55°C(each cell 150W)

## M321N5B20LED18765-S

**GALAXY modular floodlight (5-cell), Narrow light distribution, 5000K, LED18, 150000 Lumens, 1000W, Gray**

### Photometric Graph



#### Glare Evaluation According to UGR

p Ceiling		70	70	50	50	30	70	70	50	50	30
p Walls		50	30	50	30	30	50	30	50	30	30
p Floor		20	20	20	20	20	20	20	20	20	20
Room Size	Viewing direction at right angles to lamp axis	Viewing direction parallel to lamp axis									
X Y											
2H	2H	23.7	24.7	24.0	24.9	25.1	23.5	24.4	23.7	24.6	24.9
	3H	24.8	25.7	25.1	25.9	26.2	24.4	25.3	24.7	25.6	25.8
	4H	25.1	25.9	25.4	26.2	26.4	24.7	25.5	25.0	25.8	26.0
	6H	25.2	26.0	25.5	26.2	26.5	24.8	25.5	25.1	25.8	26.1
4H	8H	25.2	25.9	25.5	26.2	26.5	24.8	25.5	25.1	25.8	26.1
	12H	25.2	25.9	25.5	26.2	26.5	24.7	25.4	25.1	25.7	26.1
	2H	24.2	25.0	24.5	25.3	25.6	24.0	24.8	24.3	25.1	25.4
	3H	25.4	26.1	25.8	26.4	26.8	25.1	25.8	25.5	26.1	26.4
8H	4H	25.8	26.4	26.2	26.7	27.1	25.4	26.1	25.8	26.4	26.8
	6H	26.0	26.5	26.4	26.9	27.2	25.6	26.1	26.0	26.5	26.9
	8H	26.0	26.4	26.4	26.8	27.2	25.6	26.1	26.0	26.4	26.9
	12H	26.0	26.4	26.4	26.8	27.2	25.6	26.0	26.0	26.4	26.8
12H	4H	25.9	26.4	26.3	26.7	27.2	25.6	26.0	26.0	26.4	26.8
	6H	26.1	26.5	26.5	26.9	27.3	25.7	26.1	26.2	26.5	27.0
	8H	26.1	26.4	26.6	26.9	27.4	25.8	26.1	26.2	26.5	27.0
	12H	26.1	26.4	26.6	26.8	27.3	25.7	26.0	26.2	26.5	27.0
Variation of the observer position for the luminaire distances S											
S = 1.0H		+0.2	/	-0.3		+0.2	/	-0.3			
S = 1.5H		+0.4	/	-0.7		+0.5	/	-0.8			
S = 2.0H		+0.8	/	-1.3		+1.0	/	-1.5			
Standard table		BK03					BK03				
Correction		8.2					7.9				
Summand											
Corrected Glare Indices referring to 150000lm Total Luminous Flux											

### Dimensional Drawing

