

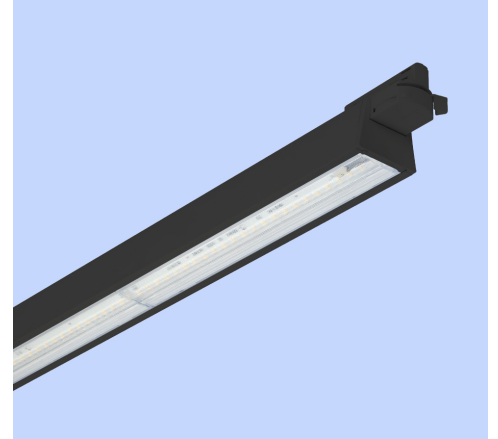
M480A601LED2840-BL

LUMERIA linear track light with lens (Single-pole), Asymmetrical light distribution, Length: 60cm, 4000K, LED2, 2800 Lumens, 25W, Black



About Product

LUMERIA Track light luminaire is Megalite state of the art design suitable for high ceilings. LUMERIA is offered with optional lenses for symmetrical, asymmetrical, double asymmetrical, or uniform light distribution. Energy saving, glare control, and aesthetically beautiful design are among the highlights of this luminaire.

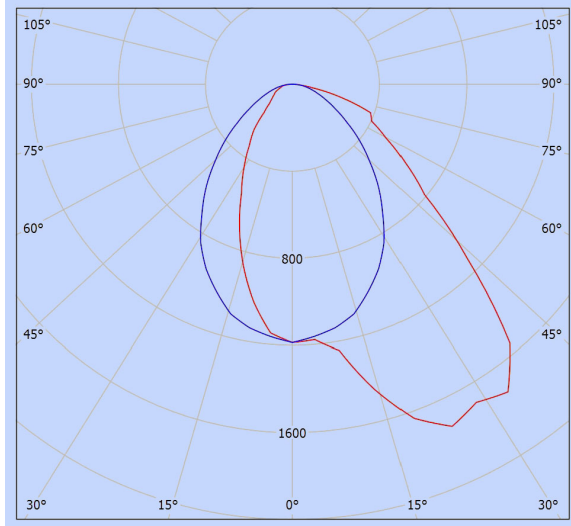


Technical Information

Luminaire Name:	LUMERIA
Catalog Code/product code:	M480A601LED2840-BL
Mounting Type:	Track light
Application:	Hypermarket. Shopping centers. Gallery and museum
Light source type:	LED
Module/ Lamp quantity:	1
CCT (Color temperature):	4000K - Neutral White
Light source:	LED
LED Module brand name:	Vossloh Schwabe
CRI (Color rendering index):	> 80
Power Consumption:	25
Luminous Flux:	2800
Efficacy (lm/W):	112
IP (Ingress Protection):	IP40
Insulation Class:	Class I
Ballast/ Driver:	Constant Current Driver (PF> 0.9)
Ballast/ Driver brand name:	Vossloh Schwabe
FLICKER:	Flicker Free
Ballast/ driver Spec:	Non-dimmable
Ballast/ Driver (Channel quantity):	Single channel

M480A601LED2840-BL**LUMERIA linear track light with lens (Single-pole), Asymmetrical light distribution, Length: 60cm, 4000K, LED2, 2800 Lumens, 25W, Black**

Mains voltage:	198~276 VDC, 220~240 VAC±10%
Voltage Frequency:	50/60 Hz ; 0 (DC)
Wire / Cable Spec:	GF PVC solid wire
Wire cross section:	0.5
Body Material:	Extruded aluminum profile
Body Coating:	Powder coated
Body Color:	Black
RAL:	RAL9005
Lens Material:	Clear polycarbonate
Light Distribution:	Asymmetrical Light Distribution
Packaging type:	Nylon cover and carton
Weight(Kg):	1.05
Dimensions(mm):	578x55x42

M480A601LED2840-BL**LUMERIA linear track light with lens (Single-pole), Asymmetrical light distribution, Length: 60cm, 4000K, LED2, 2800 Lumens, 25W, Black****Photometric Graph****Dimensional Drawing**