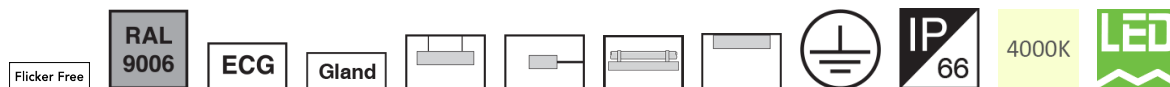


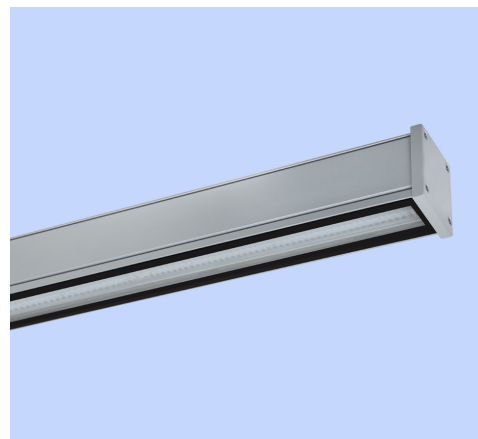
## M455DA601LED2840-S

**SEALIUM dust and moisture proof linear luminaire, Double asymmetrical light distribution, Length: 60cm, 4000K, LED2, 2400 Lumens, 20W, Silver**



### About Product

SEALIUM dust & moisture proof linear luminaire is Megalite state of the art design suitable for various dusty and humid industrial and parking lot lighting applications. Aesthetically beautiful design, durability, UV free, high impact and thermal resistance, various light distribution, high efficacy, ease of installation and maintenance, energy saving, environment friendliness, and high ingress protection (IP66) are among the highlights of this luminaire.



### Technical Information

Luminaire Name:	SEALIUM
Catalog Code/product code:	M455DA601LED2840-S
Mounting Type:	Surface Mounted. Pipe clamp mounting, Wall mounting with bracket, Suspended
Application:	Industrial area, Parking
Light source type:	LED
Module/ Lamp quantity:	1
CCT (Color temperature):	4000K - Neutral White
Light source:	LED
LED Module brand name:	Edison
Lumen maintenance:	> 100.000 hours
Lumen maintenance factor:	L70
CRI (Color rendering index):	> 80
Power Consumption:	20
Luminous Flux:	2400
Efficacy (lm/W):	120
IP (Ingress Protection):	IP66
Insulation Class:	Class I
Max. Ambient Temperature:	50°C
Min. Ambient Temperature:	-40°C
Ballast/ Driver:	Constant Current Driver (PF> 0.9)

**M455DA601LED2840-S**

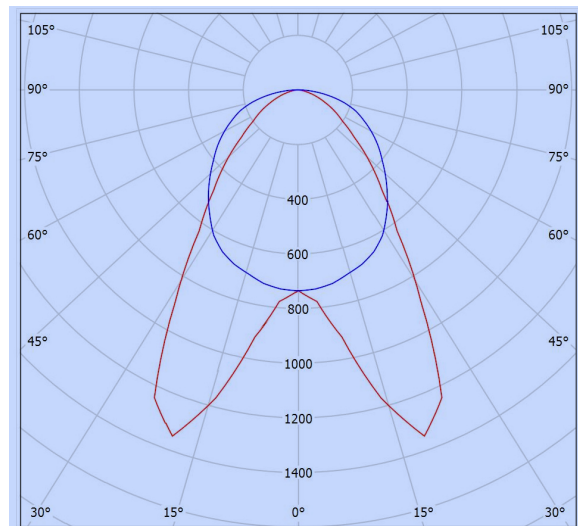
**SEALIUM dust and moisture proof linear luminaire, Double asymmetrical light distribution, Length: 60cm, 4000K, LED2, 2400 Lumens, 20W, Silver**

Ballast/ Driver brand name:	Vossloh Schwabe
FLICKER:	Flicker Free
Ballast/ driver Spec:	Non-dimmable
Ballast/ Driver (Channel quantity):	Single channel
Mains voltage:	220~240 VAC±10%
Voltage Frequency:	50~60 Hz
Wire / Cable Spec:	GF PVC solid wire
Wire cross section:	0.5
Terminal material:	Polycarbonate
Terminal Spec:	Tool free wire connection, 3-Pole (Size: 2.5)
Cable Gland Spec:	Brass
Cable gland type:	PG13.5
Body Material:	Extruded aluminum profile
Body Coating:	Powder coated
Body Color:	Silver
RAL:	RAL9006
End Caps Material:	Die-Cast aluminum
Diffuser/Glass Material:	Tempered glass
Diffuser/Glass Shape:	Flat
Diffuser/Glass Characteristic:	5mm thickness
Lens Material:	Clear polycarbonate
Light Distribution:	Double Asymmetric
Gasket Material:	silicon
Gasket Characteristic:	Dimensional stability for permanently safe tightness against water and dust, Resistant to pressure, Ingress protection against dust and moisture
Clamp Material:	Stainless steel
Clamp Characteristic:	Easy and safe tool free installation of the luminaire
Packaging type:	Nylon cover and carton
Weight(Kg):	1.8
Dimensions(mm):	600x70x70
Luminaire mechanical impact resistance:	IK07
Order Option (Routine option):	Dimmable DALI PUSH driver

## M455DA601LED2840-S

**SEALIUM dust and moisture proof linear luminaire, Double asymmetrical light distribution, Length: 60cm, 4000K, LED2, 2400 Lumens, 20W, Silver**

### Photometric Graph



#### Glare Evaluation According to UGR

		70	70	50	50	30	70	70	50	50	30
p Ceiling		50	30	50	30	30	50	30	50	30	30
p Walls		20	20	20	20	20	20	20	20	20	20
p Floor		20	20	20	20	20	20	20	20	20	20
Room Size		Viewing direction at right angles to lamp axis					Viewing direction parallel to lamp axis				
X	Y										
2H	2H	18.3	19.5	18.6	19.7	20.0	23.2	24.4	23.5	24.6	24.8
	3H	18.8	19.8	19.1	20.1	20.3	24.6	25.7	24.9	26.0	26.2
	4H	18.9	19.9	19.2	20.1	20.4	25.2	26.2	25.5	26.4	26.7
	6H	18.9	19.8	19.2	20.1	20.4	25.5	26.5	25.9	26.8	27.1
	8H	18.9	19.8	19.2	20.1	20.4	25.7	26.6	26.0	26.9	27.2
	12H	18.8	19.7	19.2	20.0	20.3	25.8	26.6	26.1	26.9	27.3
4H	2H	19.2	20.2	19.5	20.5	20.8	23.2	24.2	23.5	24.5	24.8
	3H	19.8	20.6	20.1	20.9	21.3	24.8	25.6	25.2	26.0	26.3
	4H	19.9	20.7	20.3	21.0	21.4	25.4	26.2	25.8	26.5	26.9
	6H	20.0	20.6	20.4	21.0	21.4	25.9	26.6	26.3	26.9	27.3
	8H	20.0	20.6	20.4	21.0	21.4	26.1	26.7	26.5	27.1	27.5
	12H	20.0	20.5	20.4	20.9	21.3	26.2	26.8	26.7	27.2	27.6
8H	4H	20.2	20.8	20.7	21.2	21.6	25.4	26.0	25.8	26.4	26.8
	6H	20.3	20.8	20.8	21.2	21.7	25.9	26.4	26.4	26.8	27.3
	8H	20.3	20.8	20.8	21.2	21.7	26.1	26.6	26.6	27.0	27.5
	12H	20.3	20.7	20.8	21.2	21.7	26.3	26.7	26.8	27.2	27.7
	4H	20.3	20.8	20.7	21.2	21.6	25.4	25.9	25.8	26.3	26.7
	6H	20.4	20.8	20.9	21.3	21.7	25.9	26.3	26.4	26.8	27.2
12H	8H	20.4	20.8	20.9	21.2	21.7	26.1	26.5	26.6	27.0	27.4
	12H	20.4	20.8	20.9	21.2	21.7	26.1	26.5	26.6	27.0	27.4

Variation of the observer position for the luminaire distances S

S = 1.0H	+0.8 / -0.9	+0.5 / -0.6
S = 1.5H	+1.2 / -1.8	+0.7 / -0.9
S = 2.0H	+1.8 / -2.8	+1.4 / -1.1

Standard table	BK02	BK05
Correction Summand	2.1	9.2

Corrected Glare Indices referring to 2400lm Total Luminous Flux

### Dimensional Drawing

