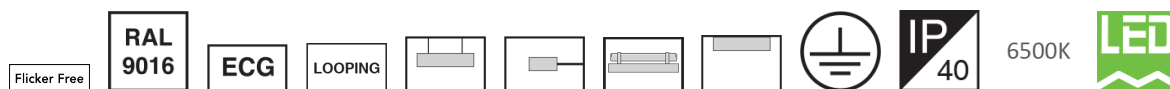


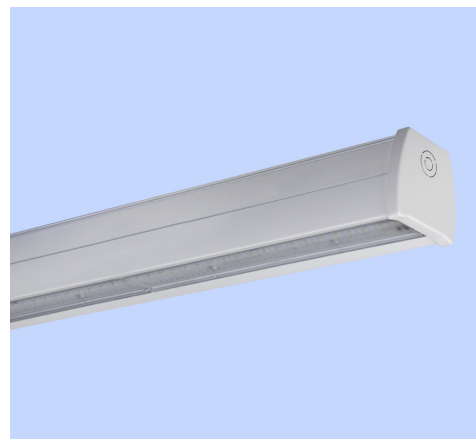
M457N601LED3865-W

LUMiLINE surface mount/suspended linear luminaire, Narrow light distribution, Length: 60cm, 6500K, LED3, 3600 Lumens, 25W, White



About Product

LUMiLINE luminaire is Megalite state of the art design suitable for high ceilings. LUMiLINE is offered with optional lenses for symmetrical, asymmetrical, or double asymmetrical light distribution. Uniform light distribution, energy saving, glare control, and aesthetically beautiful design are among the highlights of this luminaire.



Technical Information

Luminaire Name:	LUMiLINE
Catalog Code/product code:	M457N601LED3865-W
Mounting Type:	Surface Mounted. Pipe clamp mounting, Wall mounting with bracket. Suspended
Application:	Industrial area, Shopping centers, Parking, Hypermarket
Light source type:	LED
Module/ Lamp quantity:	1
CCT (Color temperature):	6500K - Daylight
Light source:	LED
LED Module brand name:	Edison
Lumen maintenance:	> 100.000 hours
Lumen maintenance factor:	L70
CRI (Color rendering index):	> 80
Power Consumption:	25
Luminous Flux:	3600
Efficacy (lm/W):	144
IP (Ingress Protection):	IP40
Insulation Class:	Class I
Min. Ambient Temperature:	-20°C
Ballast/ Driver:	Constant Current Driver (PF> 0.9)
Ballast/ Driver brand name:	Vossloh Schwabe

M457N601LED3865-W

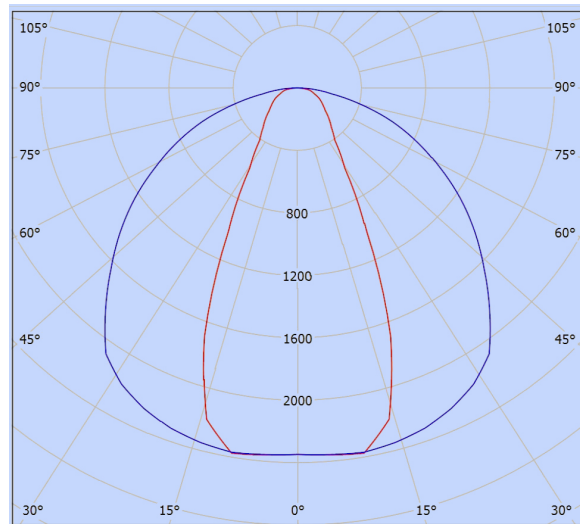
LUMiLINE surface mount/suspended linear luminaire, Narrow light distribution, Length: 60cm, 6500K, LED3, 3600 Lumens, 25W, White

FLICKER:	Flicker Free
Ballast/ driver Spec:	Non-dimmable
Ballast/ Driver (Channel quantity):	Single channel
Mains voltage:	220~240 VAC±10%
Voltage Frequency:	50/60 Hz
Wire / Cable Spec:	GF PVC solid wire
Wire cross section:	0.5
Terminal material:	Polycarbonate
Terminal Spec:	Cable looping is possible, Tool free wire connection, 3-Pole (Size: 2.5)
Cable Looping:	Yes
Body Material:	Extruded aluminum profile
Body Coating:	Powder coated
Body Color:	White
RAL:	RAL9016
End Caps Material:	Polycarbonate
Lens Material:	Clear polycarbonate
Light Distribution:	30 degrees
Clamp Material:	Stainless steel
Clamp Characteristic:	Easy and safe tool free installation of the luminaire
Packaging type:	Nylon cover and carton
Weight(Kg):	1.4
Dimensions(mm):	584x73x75
Luminaire mechanical impact resistance:	-
Other/Spare parts:	5x50 screws (2 pcs.), Wall plugs, Surface mounting clamps, Suspension clips
Order Option (Routine option):	Dimmable DALI PUSH driver

M457N601LED3865-W

LUMiLINE surface mount/suspended linear luminaire, Narrow light distribution, Length: 60cm, 6500K, LED3, 3600 Lumens, 25W, White

Photometric Graph



Glare Evaluation According to UGR												
p Ceiling		70	70	50	50	30	70	70	50	50	30	
p Walls		50	30	50	30	30	50	30	50	30	30	
p Floor		20	20	20	20	20	20	20	20	20	20	
Room Size X Y		Viewing direction at right angles to lamp axis					Viewing direction parallel to lamp axis					
2H	2H	15.7	16.7	15.9	16.9	17.2	24.6	25.7	24.9	25.9	26.1	
	3H	16.9	17.9	17.2	18.1	18.4	26.0	26.9	26.3	27.2	27.4	
	4H	17.5	18.4	17.8	18.7	19.0	26.6	27.5	26.9	27.7	28.0	
	6H	18.1	18.9	18.4	19.2	19.5	27.0	27.9	27.4	28.2	28.5	
	8H	18.2	19.0	18.6	19.3	19.7	27.2	28.0	27.5	28.3	28.6	
	12H	18.3	19.0	18.6	19.3	19.7	27.3	28.1	27.7	28.4	28.7	
4H	2H	16.6	17.5	16.9	17.7	18.0	24.5	25.4	24.8	25.6	25.9	
	3H	18.0	18.8	18.3	19.1	19.4	25.9	26.7	26.2	27.0	27.3	
	4H	18.7	19.4	19.1	19.7	20.1	26.5	27.2	26.9	27.5	27.9	
	6H	19.4	19.9	19.8	20.3	20.7	27.1	27.6	27.5	28.0	28.4	
	8H	19.6	20.1	20.0	20.5	20.9	27.3	27.8	27.7	28.2	28.6	
	12H	19.6	20.1	20.1	20.5	20.9	27.4	27.9	27.9	28.3	28.8	
8H	4H	19.1	19.7	19.5	20.0	20.5	26.5	27.0	26.9	27.4	27.8	
	6H	19.9	20.4	20.4	20.8	21.3	27.0	27.5	27.5	27.9	28.4	
	8H	20.2	20.6	20.7	21.0	21.5	27.3	27.7	27.8	28.1	28.6	
	12H	20.3	20.6	20.8	21.1	21.6	27.5	27.8	28.0	28.3	28.8	
	4H	19.2	19.7	19.6	20.1	20.5	26.4	26.9	26.9	27.3	27.8	
	6H	20.1	20.4	20.5	20.9	21.3	27.0	27.4	27.5	27.8	28.3	
12H	8H	20.4	20.7	20.9	21.2	21.7	27.3	27.6	27.8	28.1	28.6	
Variation of the observer position for the luminaire distances S												
S = 1.0H		+0.3 / -0.3					+0.7 / -0.9					
S = 1.5H		+0.5 / -0.5					+1.9 / -2.4					
S = 2.0H		+0.6 / -0.9					+3.0 / -3.7					
Standard table		BK06					BK05					
Correction Summand		2.9					10.5					
Corrected Glare Indices referring to 3600lm Total Luminous Flux												

Dimensional Drawing

