

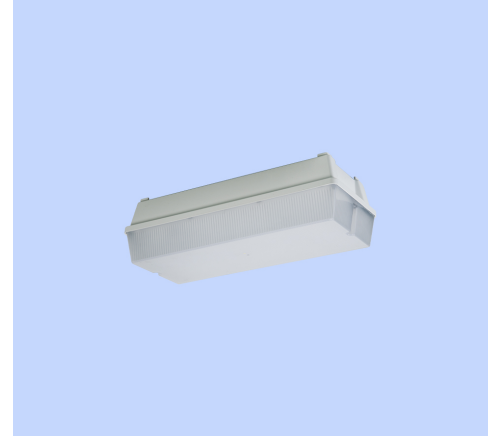
## MF1LED2EPN3

**FANAL industrial emergency luminaire, Non-Maintained, Satin white diffuser, 4000K, LED2, 800 lumens, 5W, White**



### About Product

FANAL luminaire is designed and manufactured by Megalite for emergency lighting. Sturdy body, high lighting efficacy, and high ingress protection (IP65) are among the highlights of this luminaire.



### Technical Information

Luminaire Name:	FANAL
Catalog Code/product code:	MF1LED2EPN3
Application:	Emergency, Hospitality, Industrial area, Parking, Sports area, Hypermarket, Office
Application consideration:	suitable for Indoor/Covered Outdoor
Light source type:	LED
CCT (Color temperature):	4000K - Neutral White
Light source:	LED
Lumen maintenance:	> 100.000 hours
Lumen maintenance factor:	L70
CRI (Color rendering index):	> 80
Power Consumption:	Emergency Mode : 3
Luminous Flux:	Emergency Mode : 475
IP (Ingress Protection):	IP65
Insulation Class:	Class I
Max. Ambient Temperature:	35°C
Min. Ambient Temperature:	0°C
Mains voltage:	220~240 VAC
Voltage Frequency:	50/60 Hz
Battery Type:	LiFePO4
Battery Spec:	9.6V*3*1.5Ah

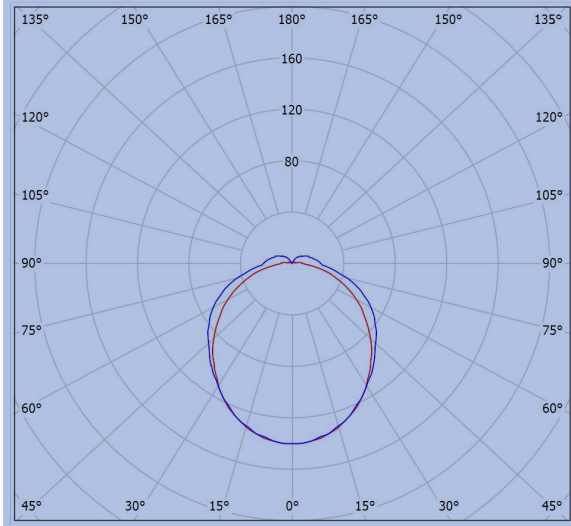
**MF1LED2EPN3****FANAL industrial emergency luminaire, Non-Maintained, Satin white diffuser, 4000K, LED2, 800 lumens, 5W, White**

Inverter/converter:	Non-maintained; 3 hour
Body Material:	Polycarbonate
Body Coating:	-
Body Color:	-
Reflector Material:	Steel sheet
Reflector Coating:	White powder coated
Reflector Characteristic:	Easy installation and maintenance by suspending the gear tray from housing
Diffuser/Glass Material:	Polycarbonate diffuser
Diffuser/Glass Shape:	Satin white
Diffuser/Glass Characteristic:	Internal prismatic surface for uniform light distribution. UV stabilized
Light Distribution:	Uniform light distribution
Gasket Material:	silicon
Packaging type:	Nylon cover and carton
Weight(Kg):	1.2
Dimensions(mm):	370x151x105
Luminaire mechanical impact resistance:	IK09
Other/Spare parts:	5x50 screws (2 pcs.), Wall plugs

## MF1LED2EPN3

**FANAL industrial emergency luminaire, Non-Maintained, Satin white diffuser, 4000K, LED2, 800 lumens, 5W, White**

### Photometric Graph



Glare Evaluation According to UGR												
Room Size		Viewing direction at right angles to lamp axis					Viewing direction parallel to lamp axis					
X	Y	70	70	50	50	30	70	70	50	50	30	
p Ceiling		50	30	50	30	30	50	30	50	30	30	
p Walls		20	20	20	20	20	20	20	20	20	20	
p Floor		20	20	20	20	20	20	20	20	20	20	
2H		2H	8.5	9.8	9.0	10.2	10.7	10.5	11.7	10.9	12.2	12.6
3H		3H	9.7	10.8	10.1	11.2	11.7	12.2	13.3	12.7	13.8	14.3
4H		4H	10.1	11.1	10.6	11.6	12.1	12.9	14.0	13.4	14.5	15.0
6H		6H	10.3	11.4	10.9	11.8	12.4	13.5	14.5	14.0	15.0	15.6
8H		8H	10.4	11.4	10.9	11.9	12.4	13.8	14.8	14.3	15.3	15.8
12H		12H	10.5	11.4	11.0	11.9	12.4	14.0	14.9	14.5	15.4	16.0
4H		2H	9.2	10.3	9.7	10.7	11.3	10.8	11.9	11.3	12.3	12.8
3H		3H	10.5	11.4	11.0	11.9	12.5	12.6	13.6	13.2	14.1	14.6
4H		4H	11.0	11.9	11.6	12.4	13.0	13.5	14.3	14.1	14.9	15.5
6H		6H	11.4	12.1	12.0	12.7	13.3	14.3	15.0	14.8	15.5	16.2
8H		8H	11.5	12.2	12.1	12.8	13.4	14.6	15.3	15.2	15.8	16.5
12H		12H	11.6	12.2	12.2	12.8	13.5	14.9	15.5	15.5	16.1	16.7
6H		4H	11.4	12.1	12.0	12.6	13.3	13.6	14.3	14.2	14.9	15.5
6H		6H	11.9	12.5	12.5	13.1	13.7	14.5	15.1	15.1	15.7	16.3
8H		8H	12.1	12.6	12.7	13.2	13.9	14.9	15.4	15.5	16.0	16.7
12H		12H	12.2	12.7	12.9	13.3	14.0	15.3	15.8	16.0	16.4	17.1
12H		4H	11.4	12.0	12.0	12.6	13.3	13.6	14.2	14.2	14.8	15.5
6H		6H	12.0	12.5	12.6	13.1	13.8	14.5	15.0	15.1	15.6	16.3
8H		8H	12.3	12.7	12.9	13.3	14.0	15.0	15.4	15.6	16.0	16.7
Variation of the observer position for the luminaire distances S												
S = 1.0H		+0.1 / -0.2					+0.1 / -0.1					
S = 1.5H		+0.3 / -0.5					+0.2 / -0.3					
S = 2.0H		+0.5 / -1.0					+0.6 / -0.6					
Standard table		BK05					BK07					
Correction Summand		-4.9					-1.2					
Corrected Glare Indices referring to 475lm Total Luminous Flux												

### Dimensional Drawing

